

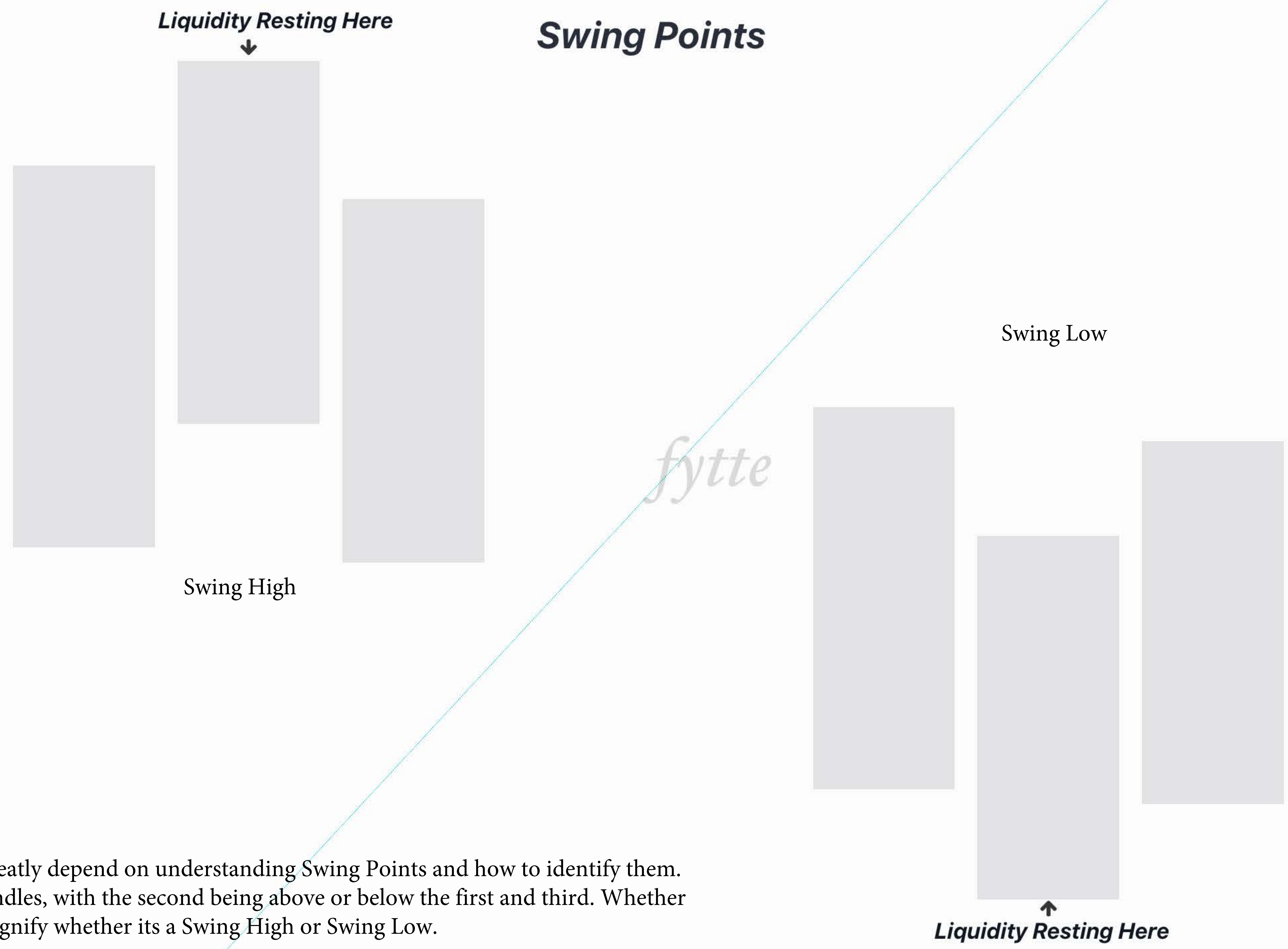
# *Price Action Continued* *by fytte*



4159.25

 CLIQUE

**PRIME** XBT



# Swing Points

**Liquidity Resting Here**



Swing High

Swing Low

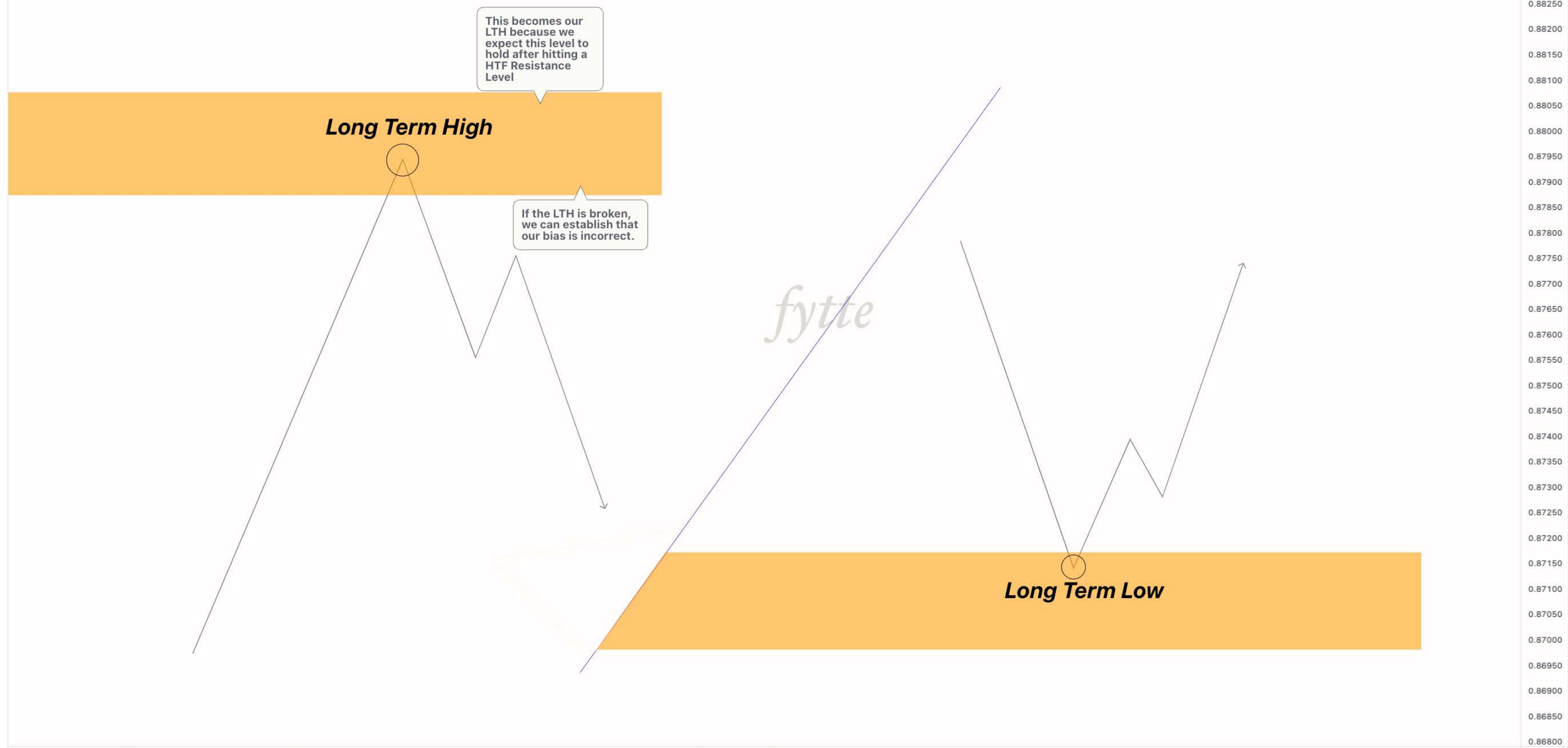
**Liquidity Resting Here**



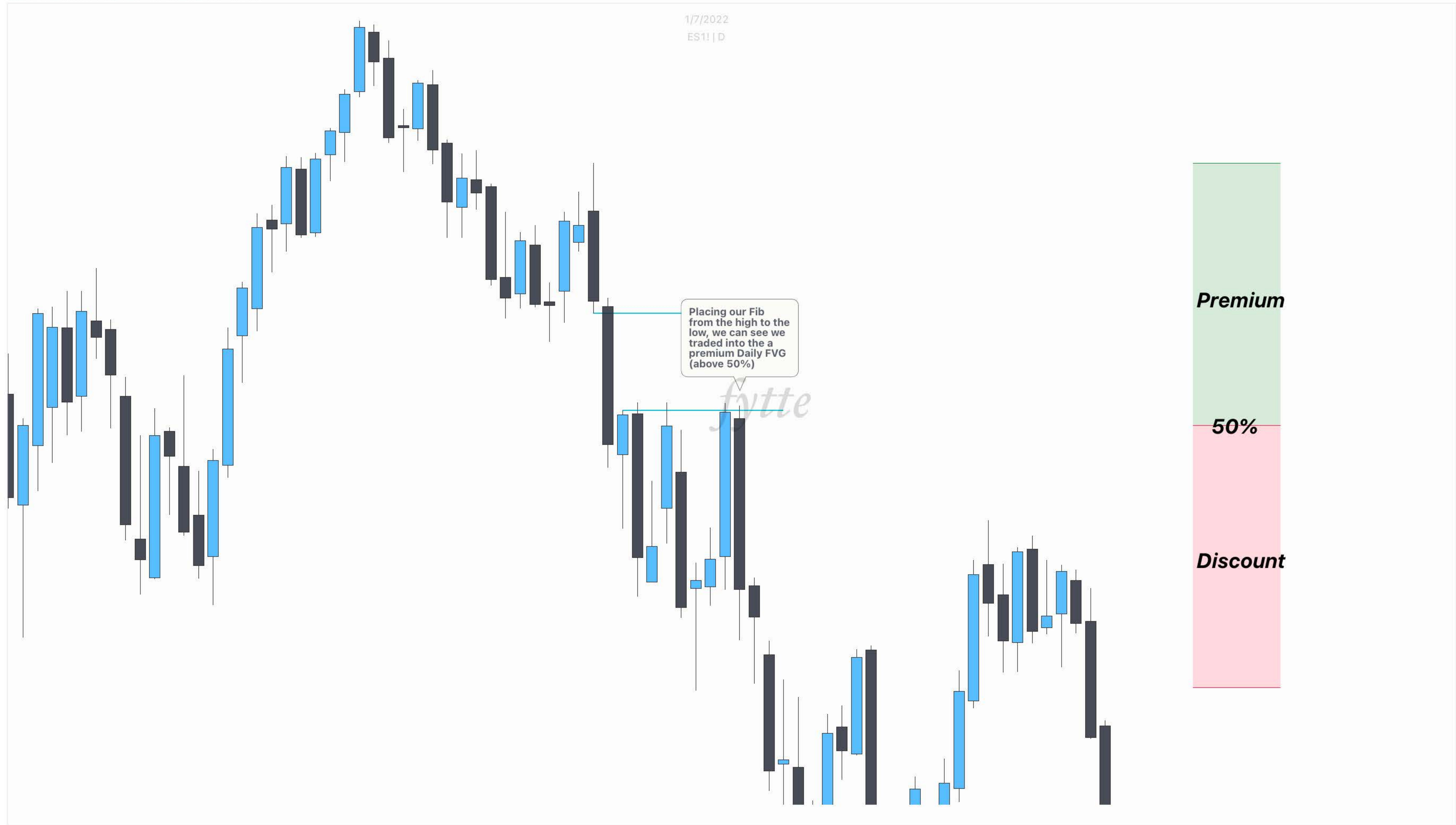
Some of these lessons greatly depend on understanding Swing Points and how to identify them. Remember it is three candles, with the second being above or below the first and third. Whether its above or below will signify whether its a Swing High or Swing Low.



# Advanced Market Structure

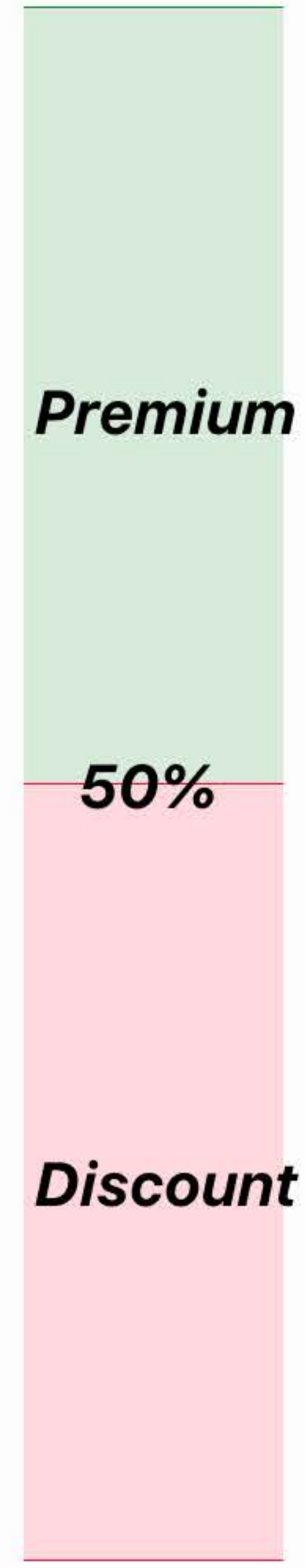


1/7/2022  
ES1! | D

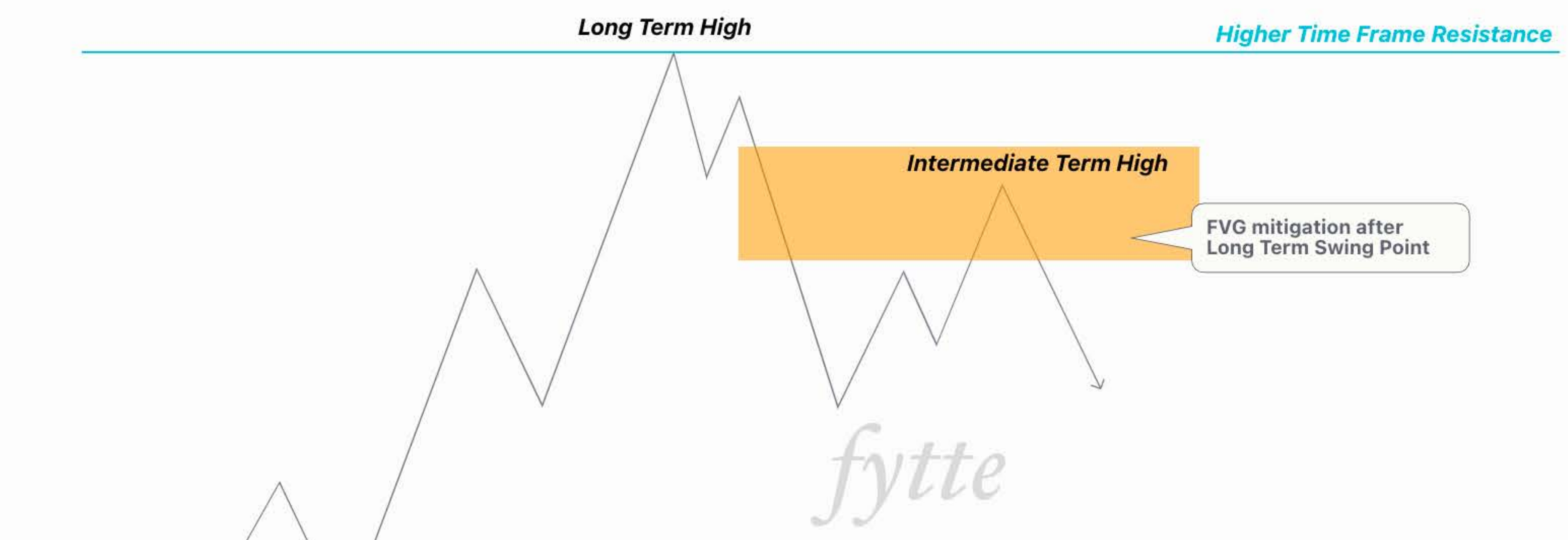


Placing our Fib from the high to the low, we can see we traded into a premium Daily FVG (above 50%)

fytte



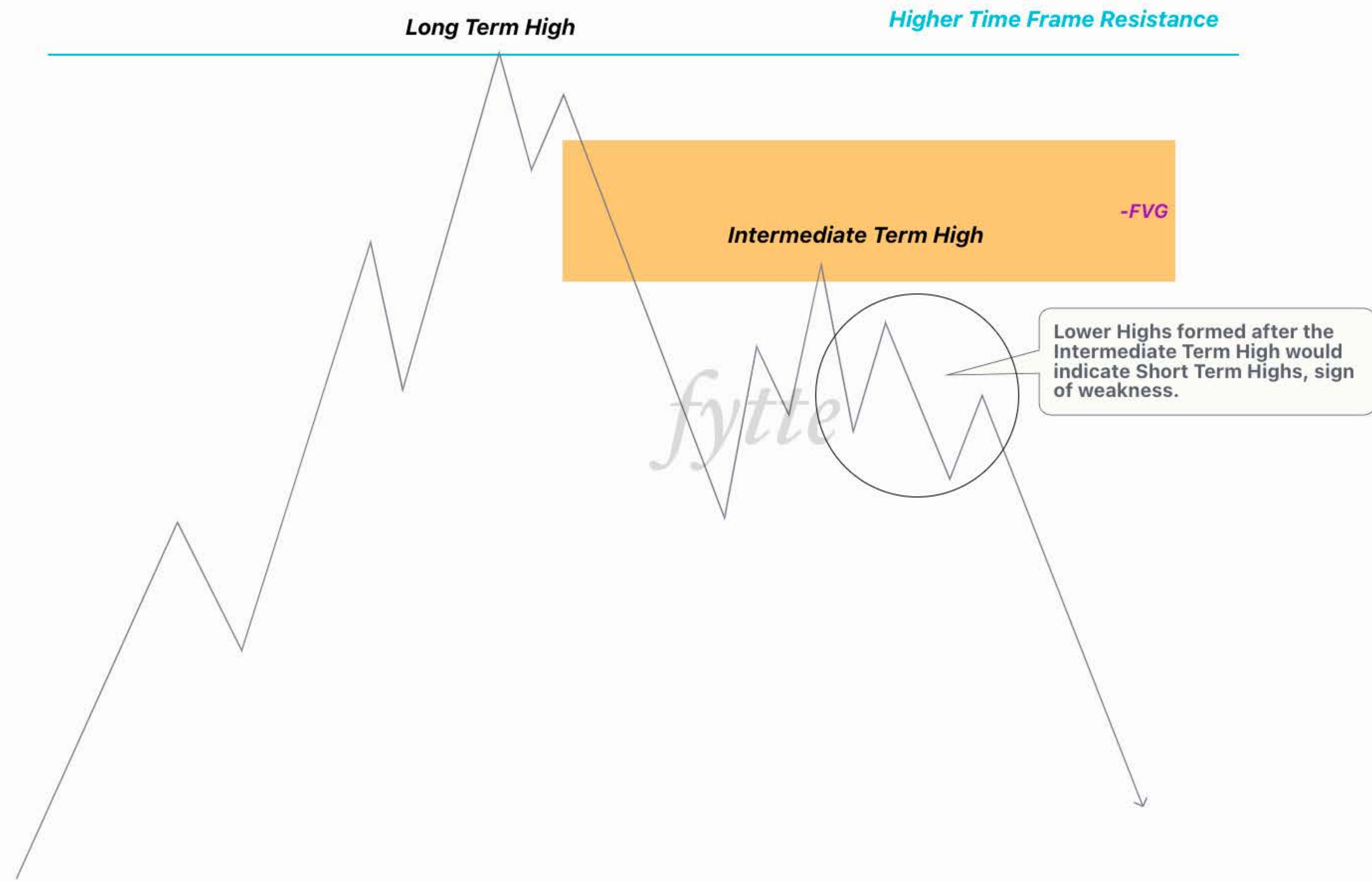


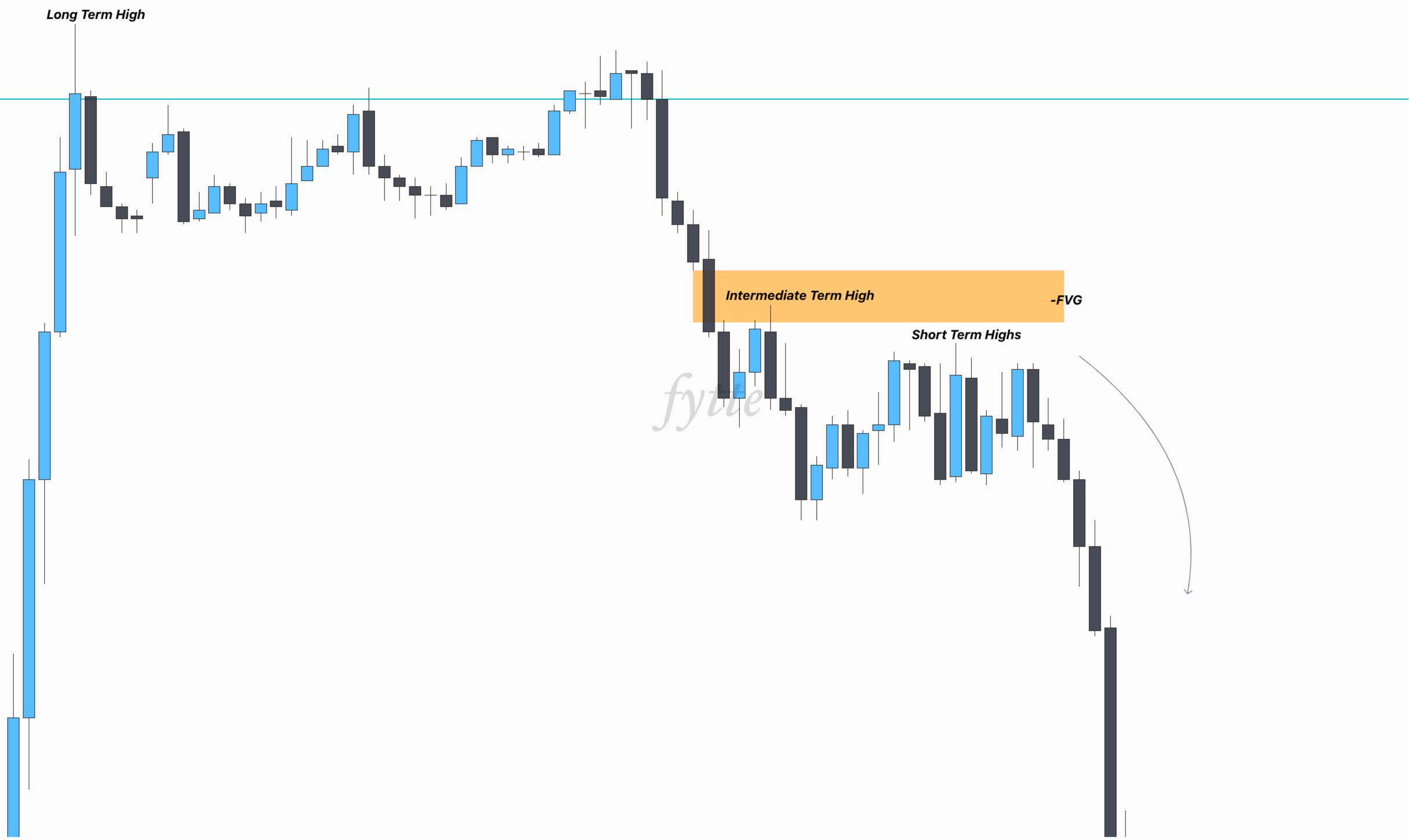


**Long Term High**



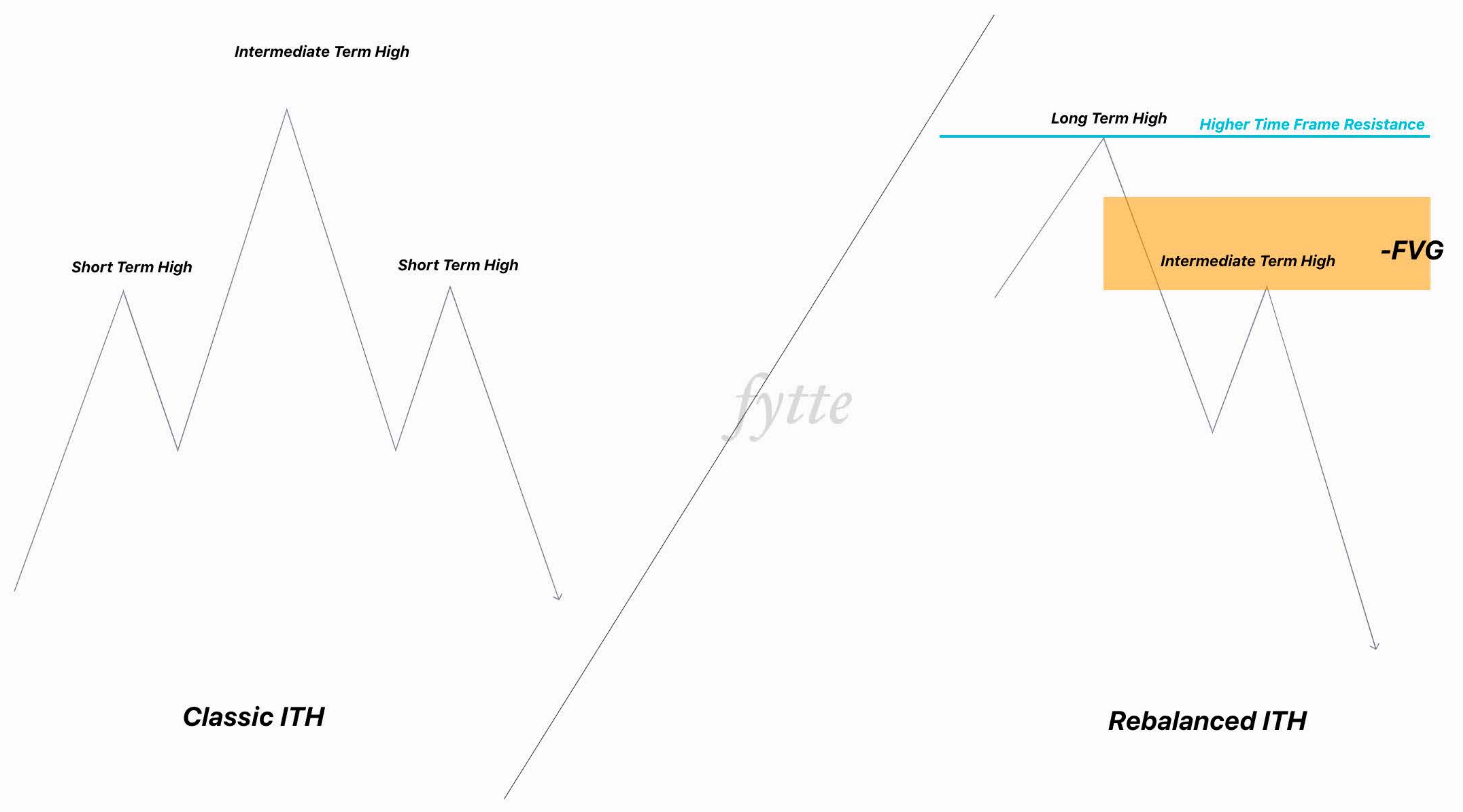
*fytte*





fytte





**Classic ITH**

**Rebalanced ITH**

**Long Term High** *Higher Time Frame Resistance*

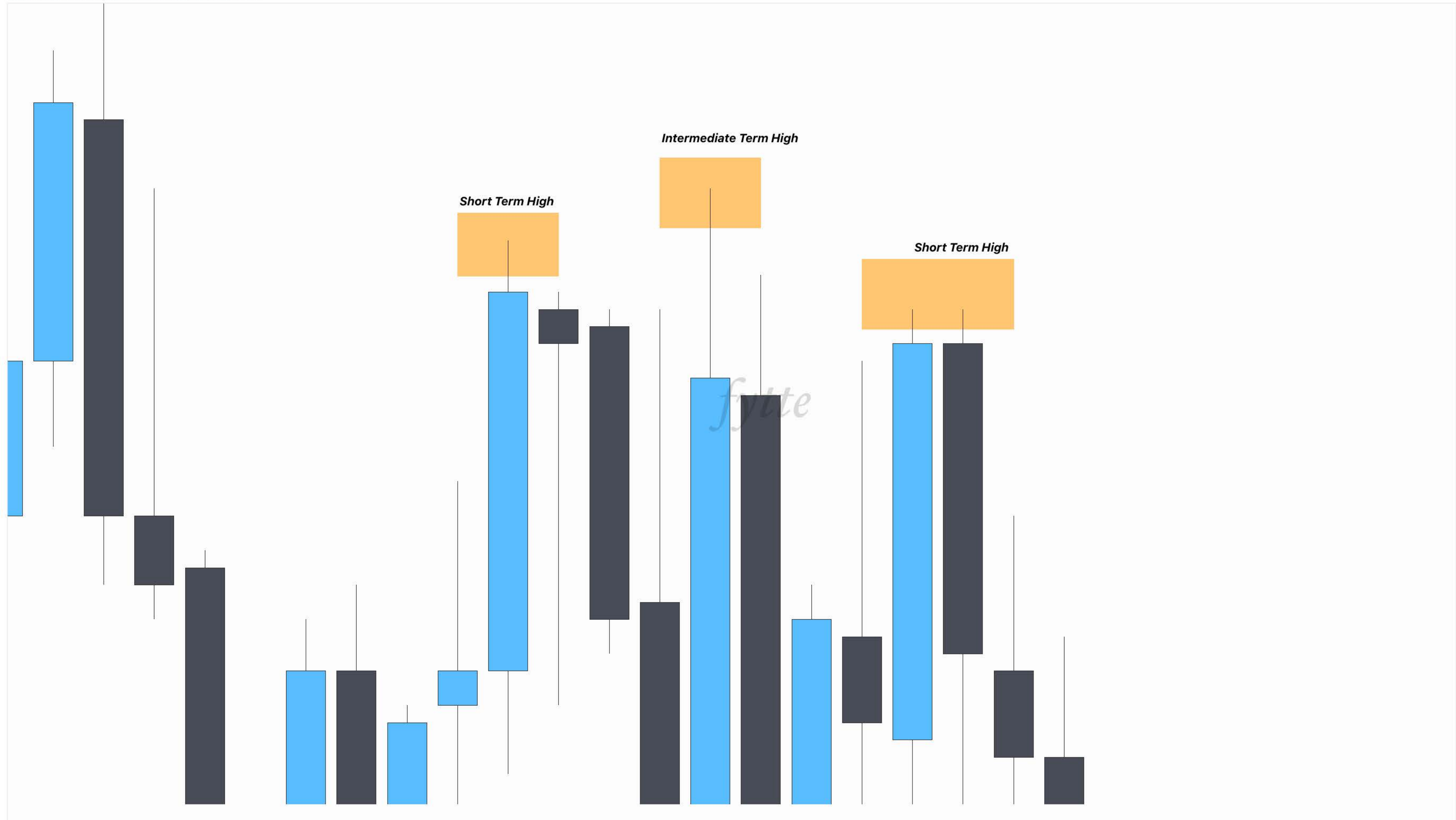
**Intermediate Term High -FVG**

**Short Term High**

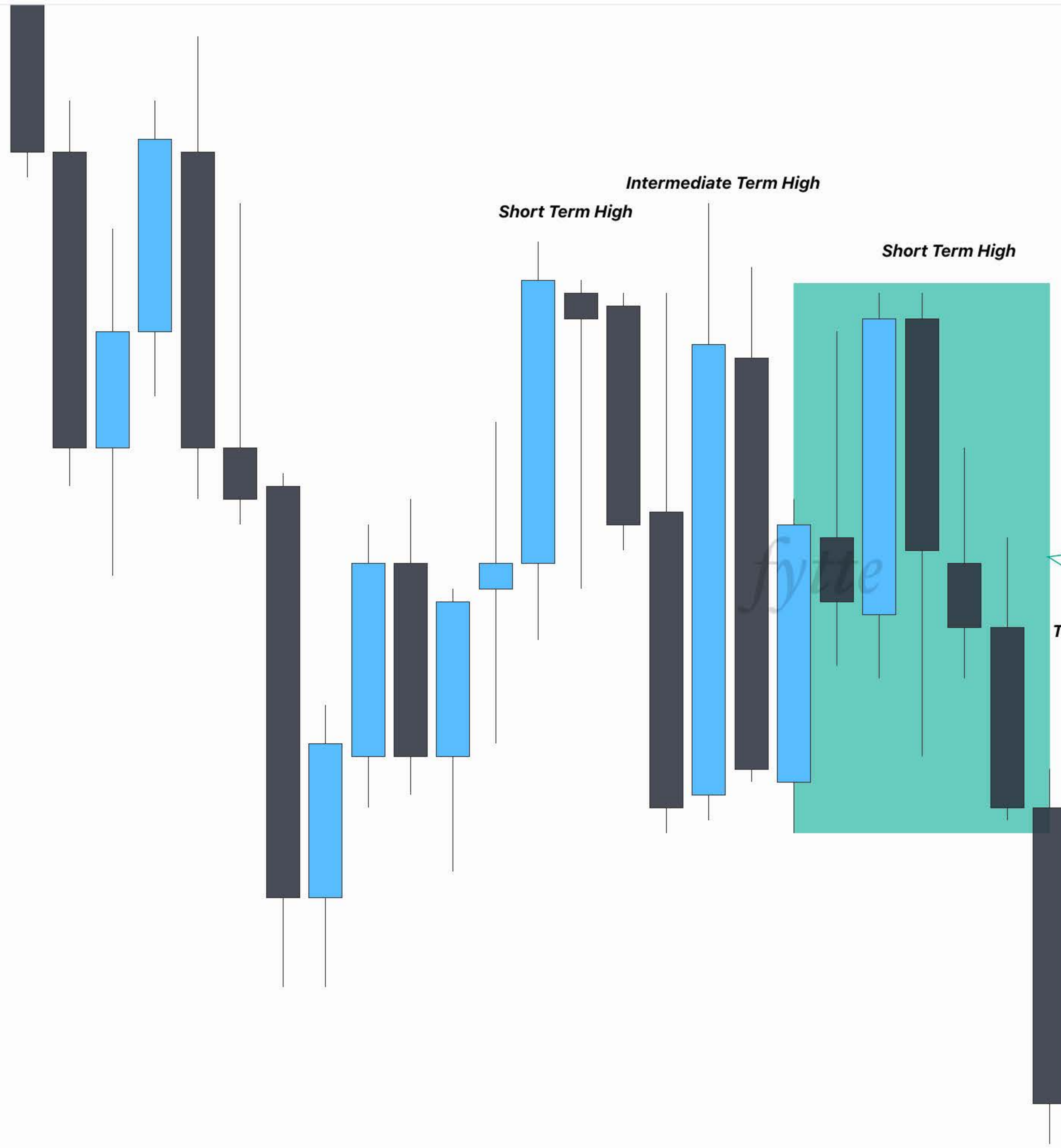
**Intermediate Term High**

**Short Term High**

*fytte*







**Intermediate Term High**  
**Short Term High**

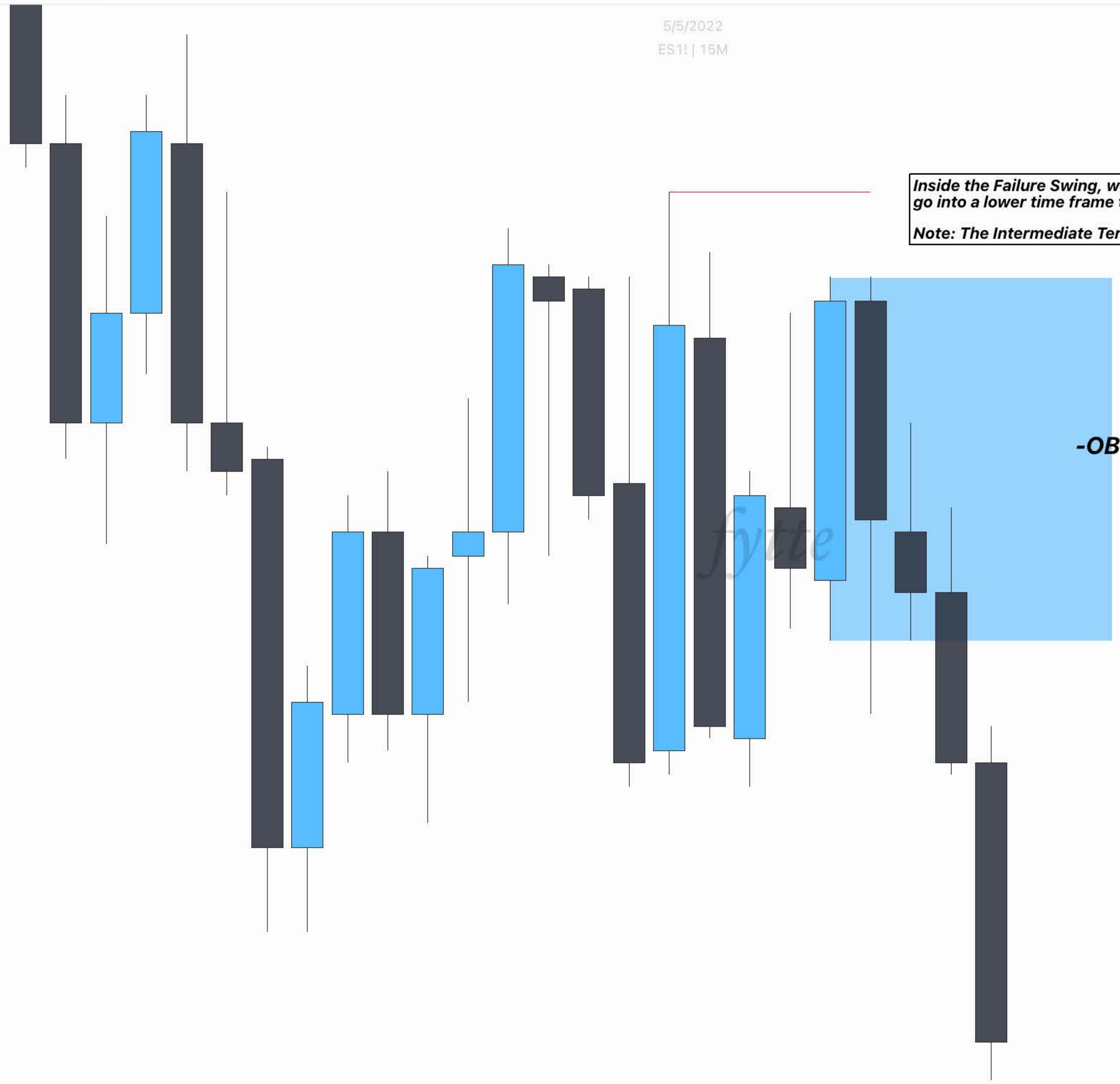
**Short Term High**

**Failure Swing**

**The Short Term High formed after the ITH = Failure Swing**

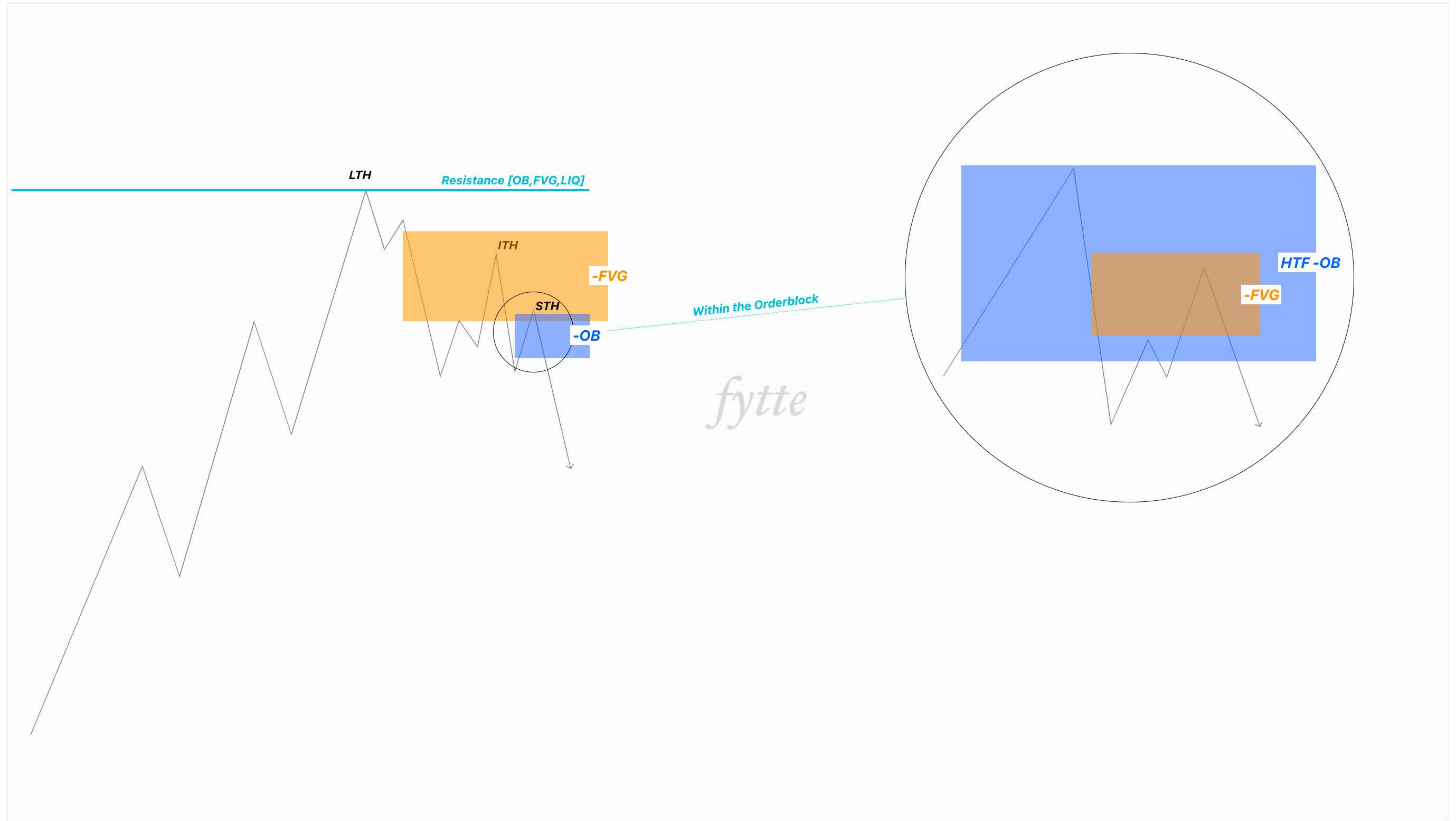
5/5/2022  
ES1! | 15M

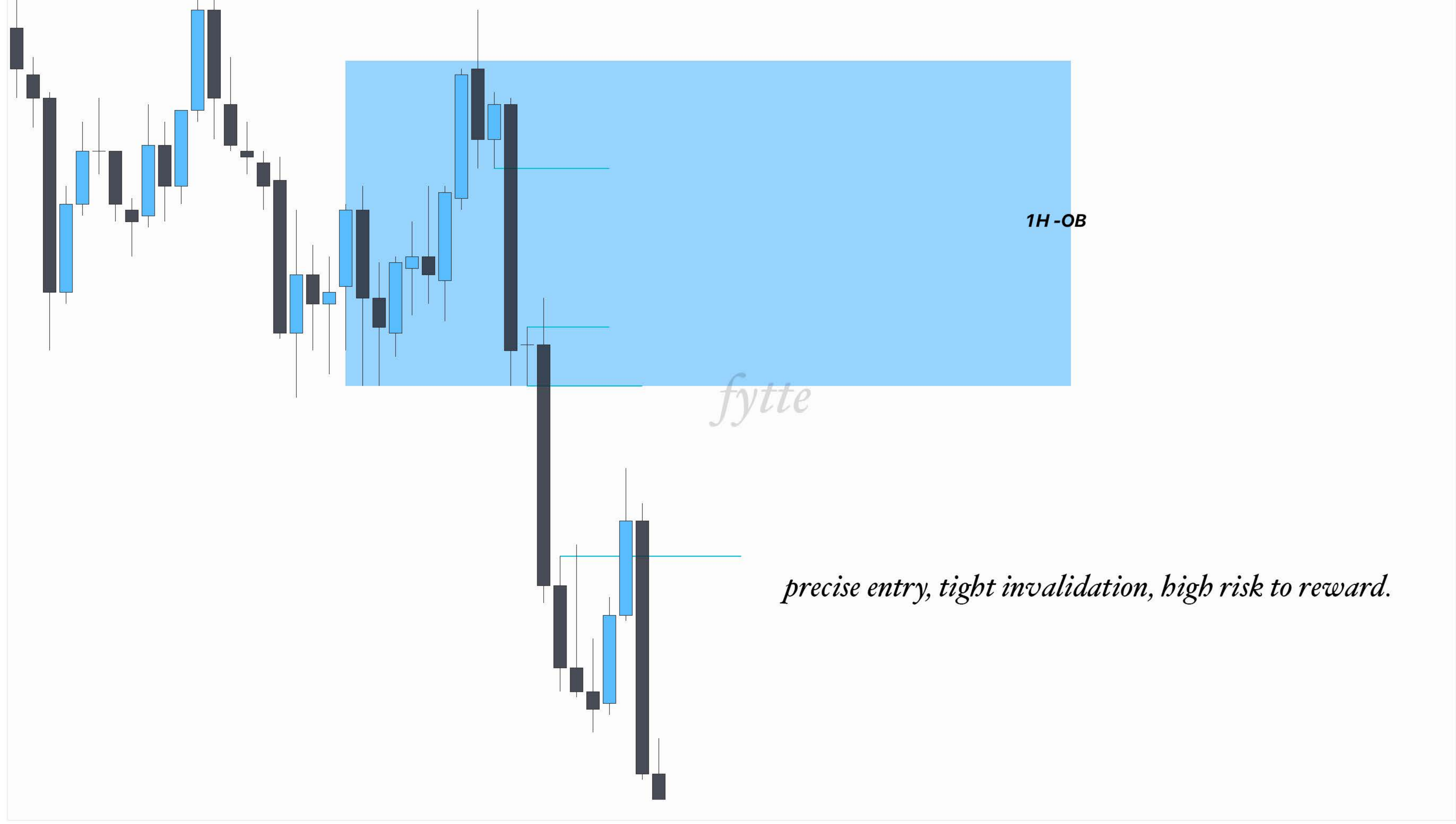
*Inside the Failure Swing, we identify the Orderblock. Afterward, we go into a lower time frame to find FVGs.*  
*Note: The Intermediate Term High should not be violated*



4258.00







**1H-OB**

*fytte*

*precise entry, tight invalidation, high risk to reward.*



# Breaker





*fytte*

MSB



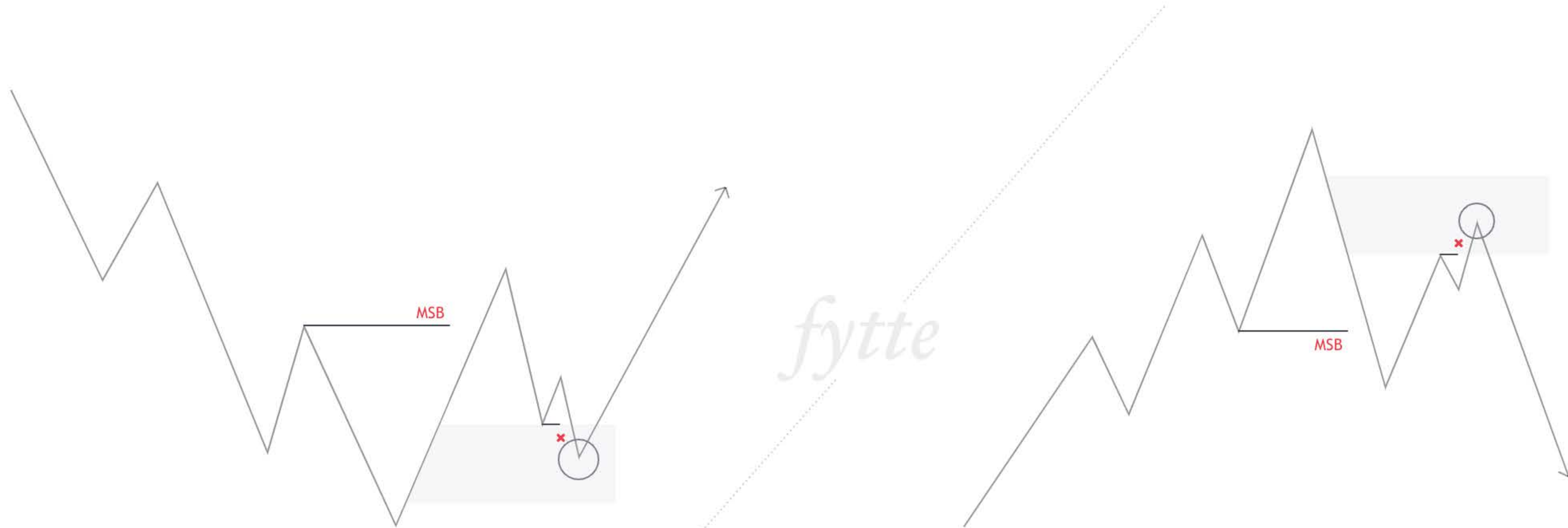




Market Structure Break

*fytte*

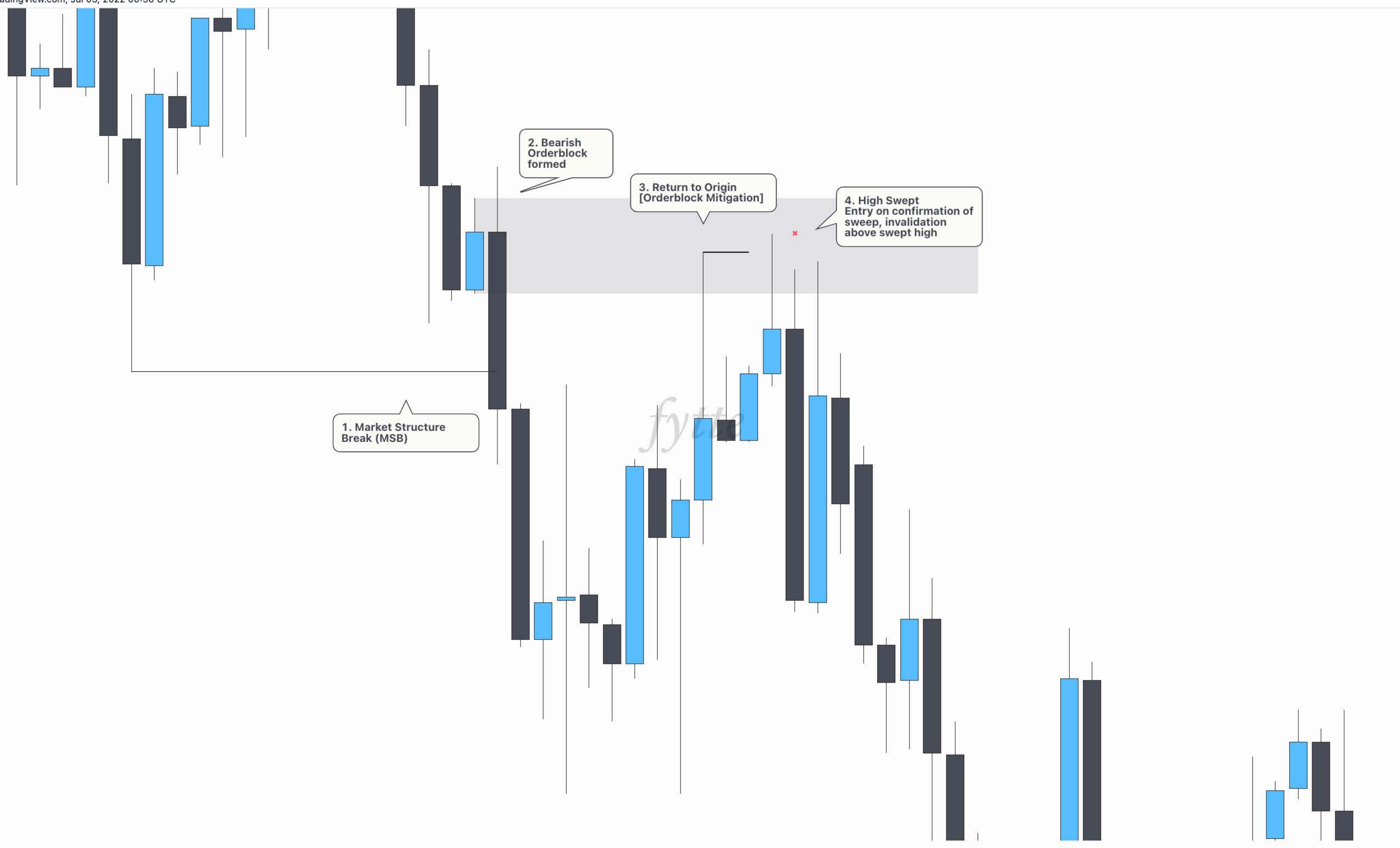
## *Sweep @ POI*



This can give high R:R if used correctly. It's important to note that the swept level should be a swing point, and once it closes inside the range and is a confirmed sweep, you can enter the trade with the invalidation at the Swept level as it should not be swept again, otherwise the trade does not have high probability. of playing out.

Don't forget to look at the swing points as it should typically be a swing point being attacked by another swing point on a point of interest (such as orderblock, breaker, fvg)







*fytte*

1. Market Structure Break:  
MSB indication that the  
trend has shifted

2. Breaker forms after MSB

Highest High

3. Short confirmation  
following a sweep  
into Breaker

a. Confirmation to  
enter a short with  
stops above the swept  
high.

Breaker Block

Old Low ✓

FVG Fill ✓

FVG Fill ✓

# Monday Range

*deviation of the monday range*

Monday High

weekly Open

Monday Low

*reverse to other side of monday range*



Trading week starts on Monday. Buy side and sell side liquidity formed on the high and low. Price deviates from the Monday Range, then magnetizes to the other side. Target Midrange, Weekly Open {optional}, and the other side of the Range.



# Standard Distribution

## Session Times

Asia Session: 23:00 - 08:00  
London Session: 07:00 - 14:00  
New York Session: 12:00 - 20:00

[GMT]

## Killzones:

High volatility / Where the action happens

Asia Killzone: 00:00 - 05:00  
London Open Killzone: 07:00 - 10:00  
New York Killzone: 12:00 - 14:00  
London Close Killzone: 15:00 - 17:00

[GMT]

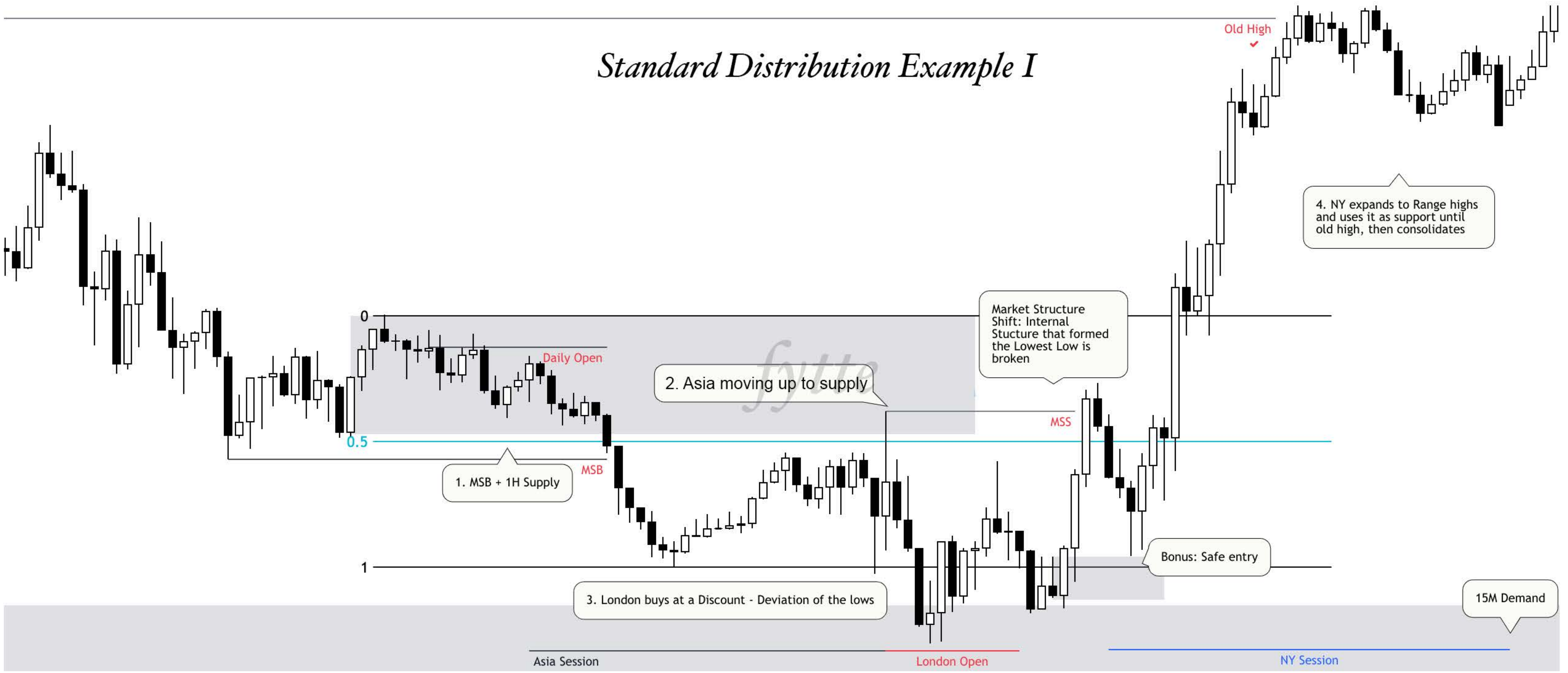


Also known as PO3 or Accumulation Manipulation Distribution / Expansion

**I do not use session times in crypto for the most part.**

I am personally testing out a strategy similar to PO3 {Asia pump/dump, London hold, NY reverse} in crypto but as of now I do not implement this standard distribution strategy into crypto. Only forex, indices, etc.

# Standard Distribution Example I



1. MSB + 1H Supply

2. Asia moving up to supply

3. London buys at a Discount - Deviation of the lows

Market Structure Shift: Internal Structure that formed the Lowest Low is broken

4. NY expands to Range highs and uses it as support until old high, then consolidates

Bonus: Safe entry

Asia Session

London Open

NY Session



# Standard Distribution Example II

