

"IF YOU CANNOT SPOT THE LIQUIDITY, THEN YOU ARE THE LIQUIDITY"



LIQUIDITY

<https://twitter.com/mrRAJA1326>

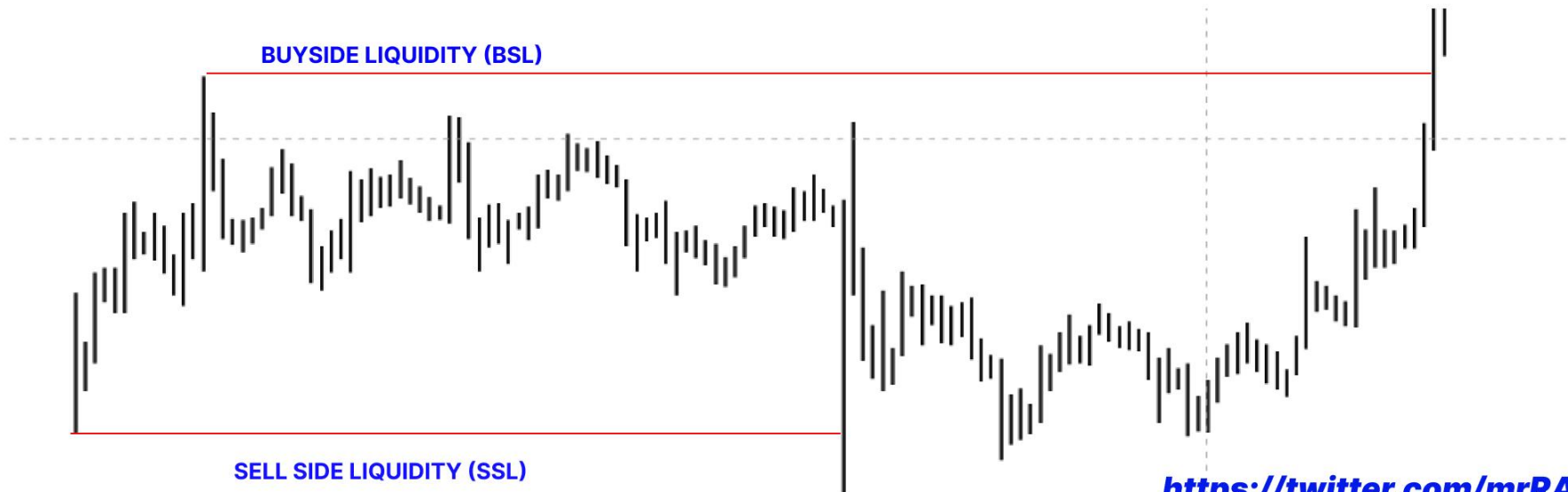
CHAPTERS:-

- ★ **Liquidity**
- ★ **Types of liquidity**
- ★ **Major liquidity**
- ★ **Medium liquidity**
- ★ **Minor liquidity**
- ★ **Liquidity transfer**
- ★ **Liquidity models**
- ★ **Spot the liquidity**
- ★ **External and internal liquidity**
- ★ **Range high & range low liquidity (liquidity building)**
- ★ **Liquidity examples**

LIQUIDITY=STOPLOSS=MONEY

□ LIQUIDITY

- Liquidity is where there are lots of stoplosses/money and most people are looking to take trades.
- Tons of stoploss=liquidity zones
- smart money will move the price where there is lot of stoploss (liquidity zones), taking them out before moving the real move direction.
- market moves based on price manipulation and to be there price manipulation in order to obtain liquidity.
- Every top and bottom in a market is liquidity.

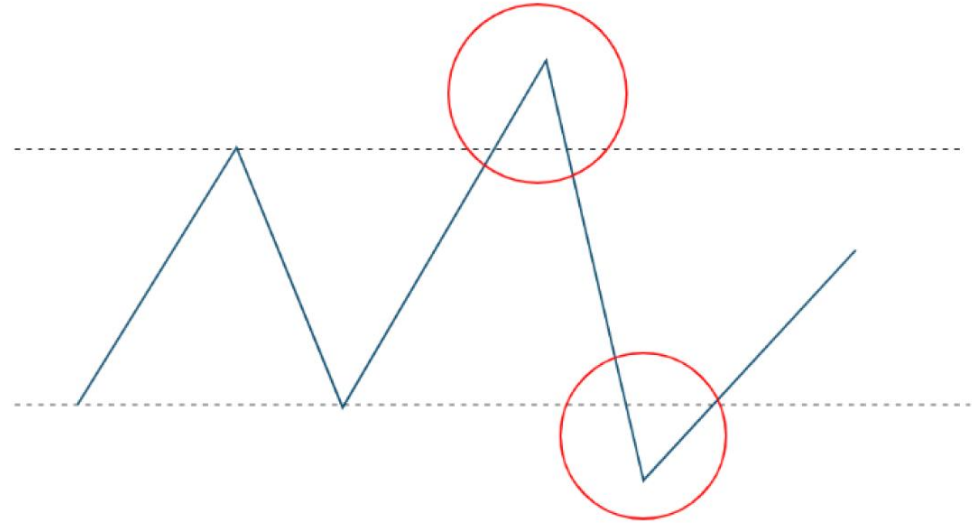


□ **TYPES OF LIQUIDITY:-**

★ **Major liquidity**

★ **Medium liquidity**

★ **Minor liquidity**





MAJOR LIQUIDITY:-

major liquidity = major move

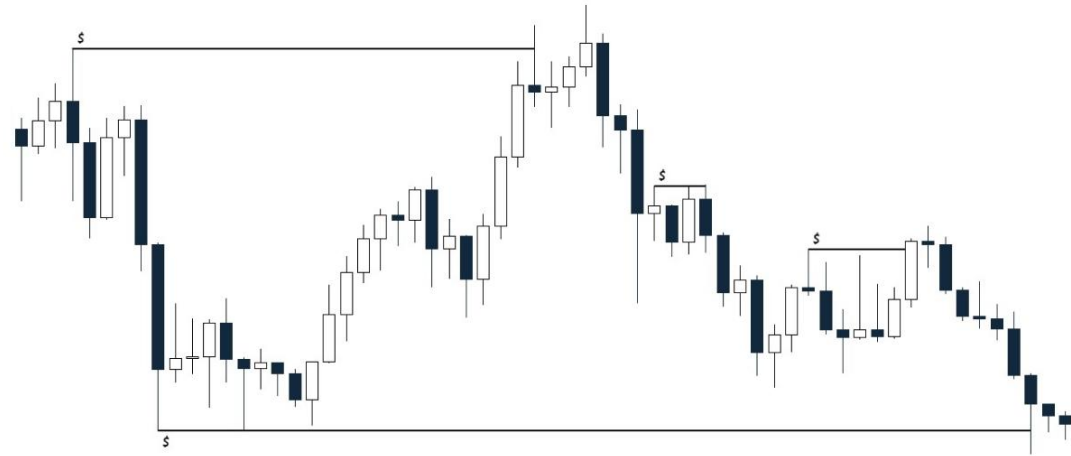
★ **PREVIOUS MONTHLY HIGHS AND LOWS**

★ **PREVIOUS YEARLY HIGHS AND LOWS**

★ **PREVIOUS WEEKLY HIGHS AND LOWS**

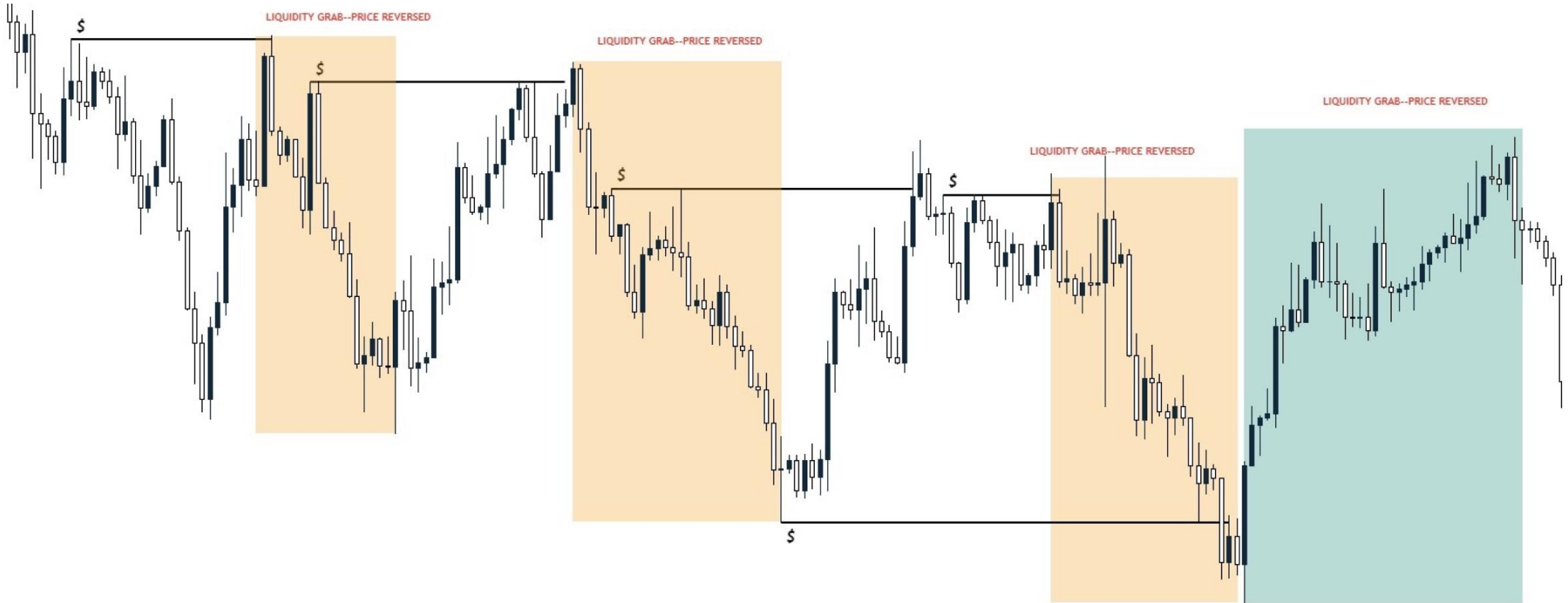
★ **PREVIOUS DAILY HIGHS AND LOWS**

★ **SWING STRUCTURE HIGHS AND LOWS(HTF)**



☐ MEDIUM LIQUIDITY

★ STRUCTURE HIGHS AND LOWS ON HOURLY CHART



□ MINOR LIQUIDITY

★ MINOR LIQUIDITY IS FOUND ON THE MINUTES (30M,15M,5M,M1)



LIQUIDITY TRANSFER:-

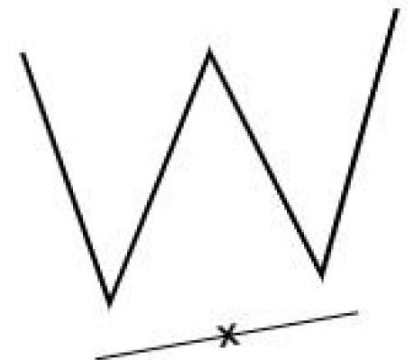
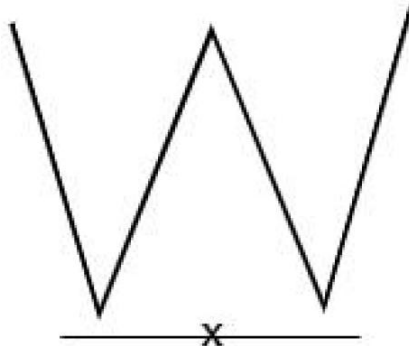
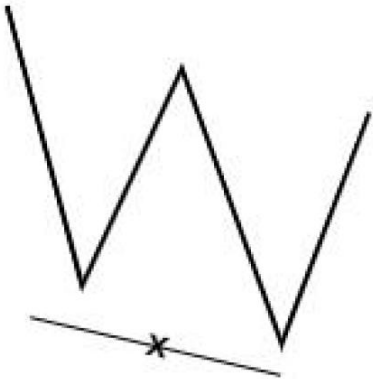
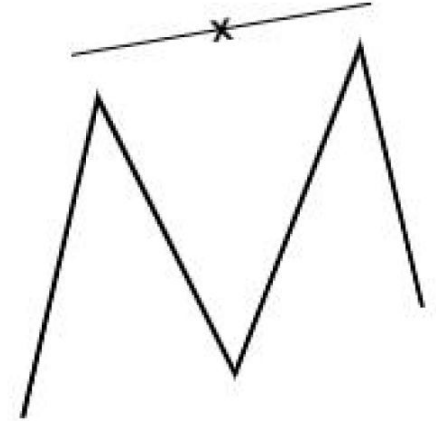
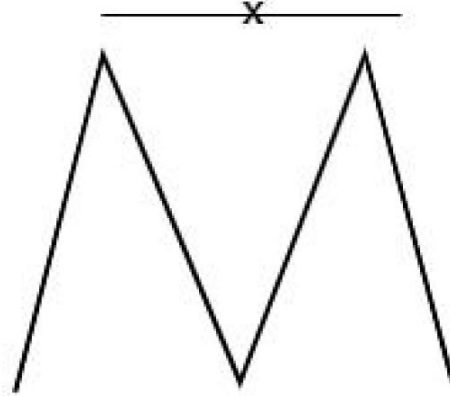
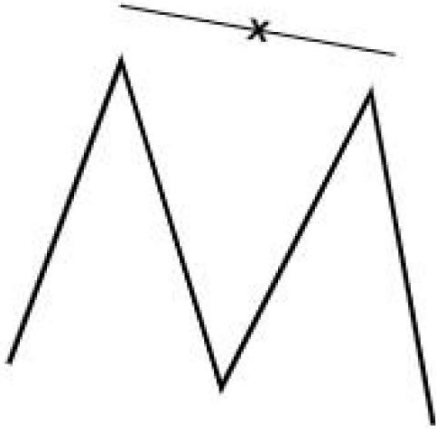


★ **HTF LIQUIDITY > LTF LIQUIDITY**

★ **MONTHLY LIQUIDITY > WEEKLY LIQUIDITY >**

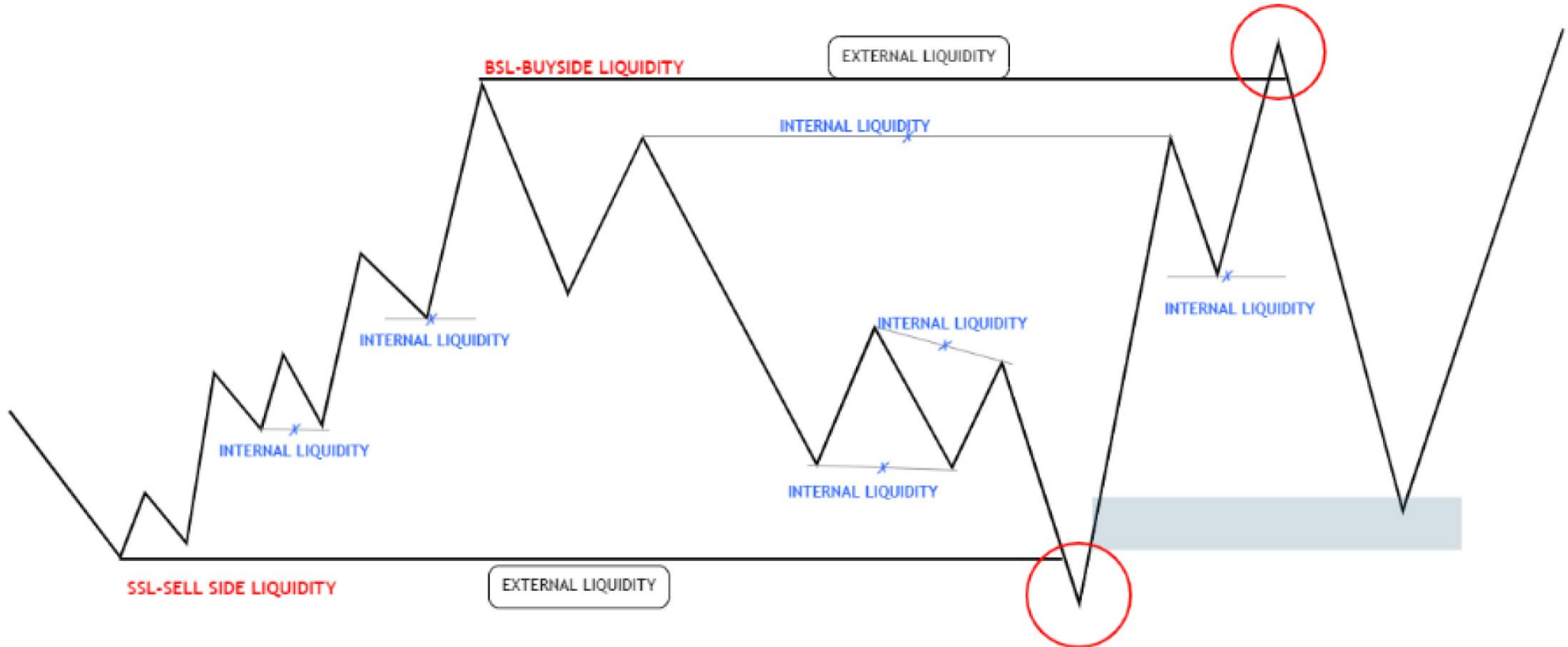
★ **DAILY LIQUIDITY > HOURLY LIQUIDITY > MINUTES LIQUIDITY**

LIQUIDITY MODELS



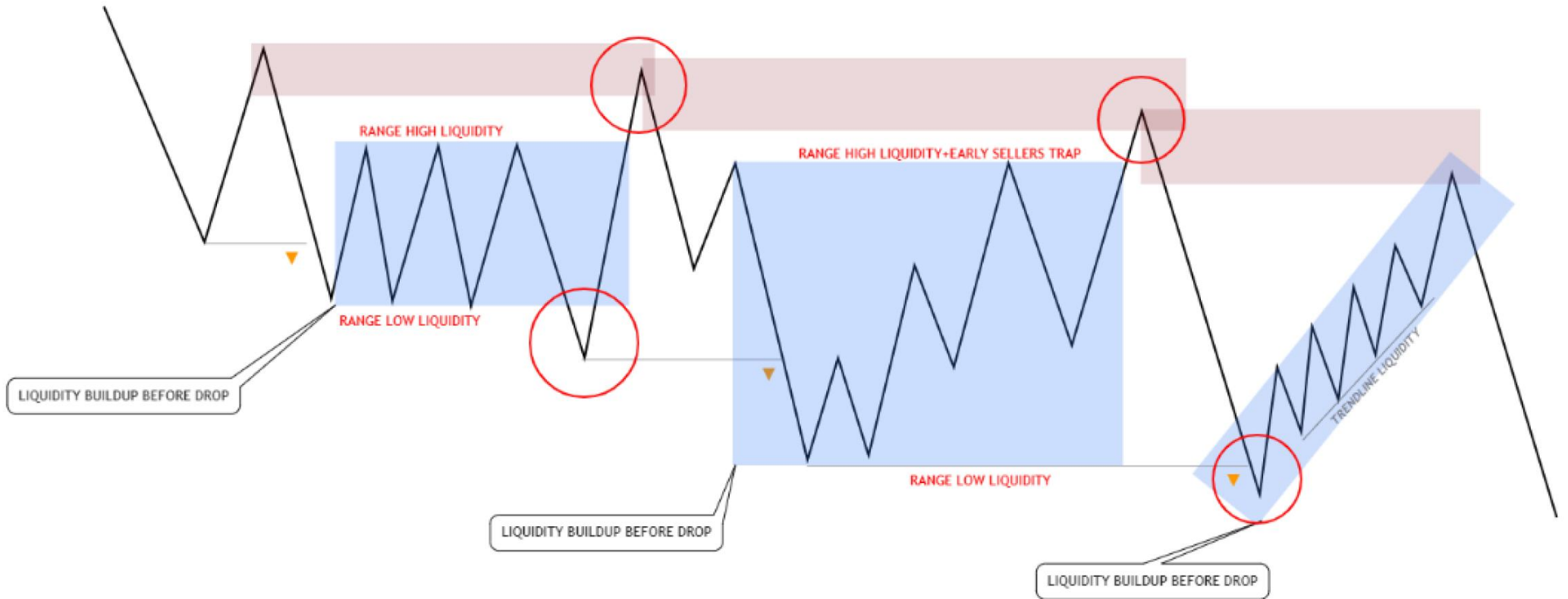


EXTERNAL-INTERNAL-EXTERNAL **(LIQUIDITY)**

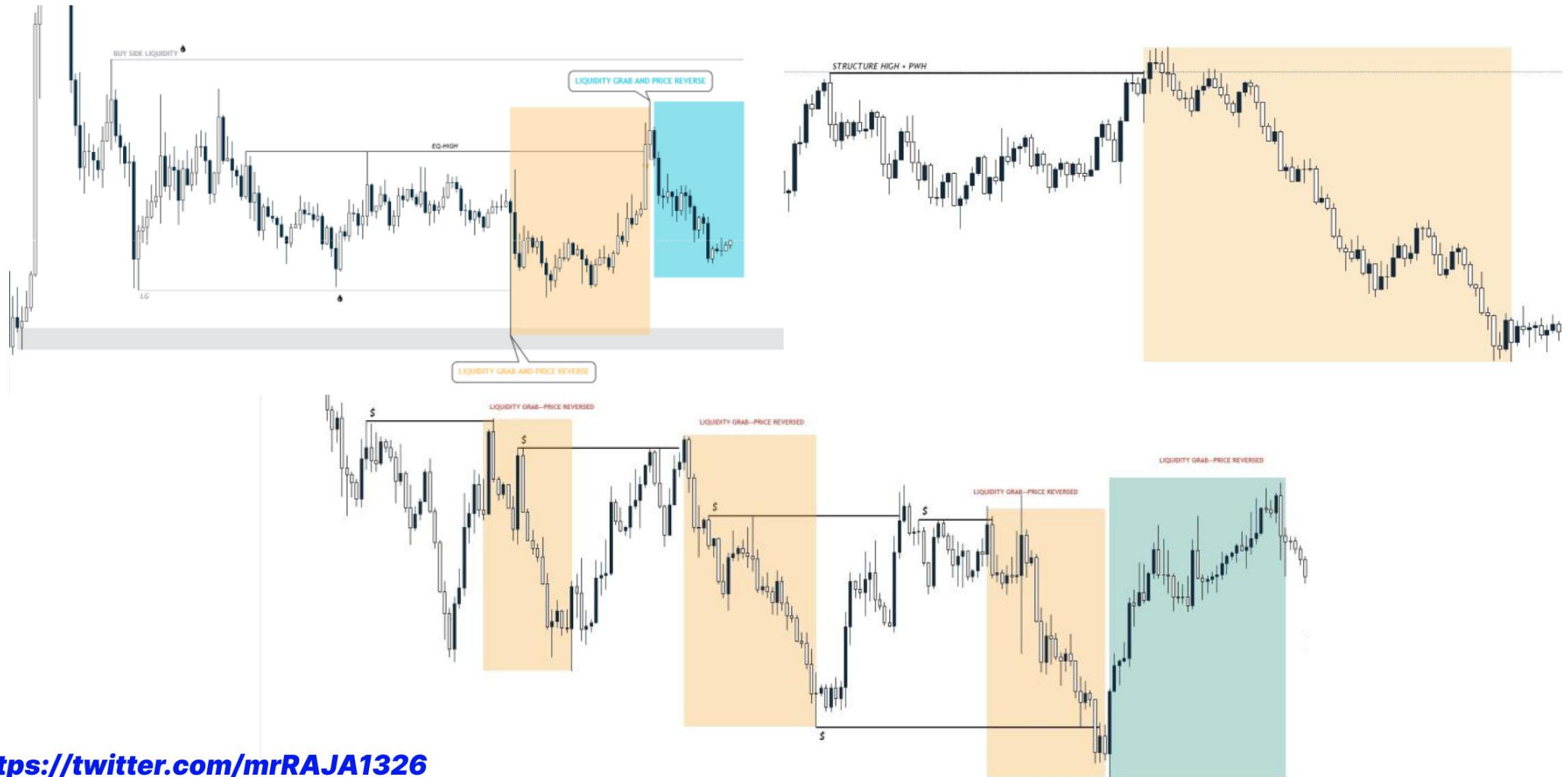


RANGE HIGH & RANGE LOW

market makes liquidity buildup before the real move



Liquidity examples

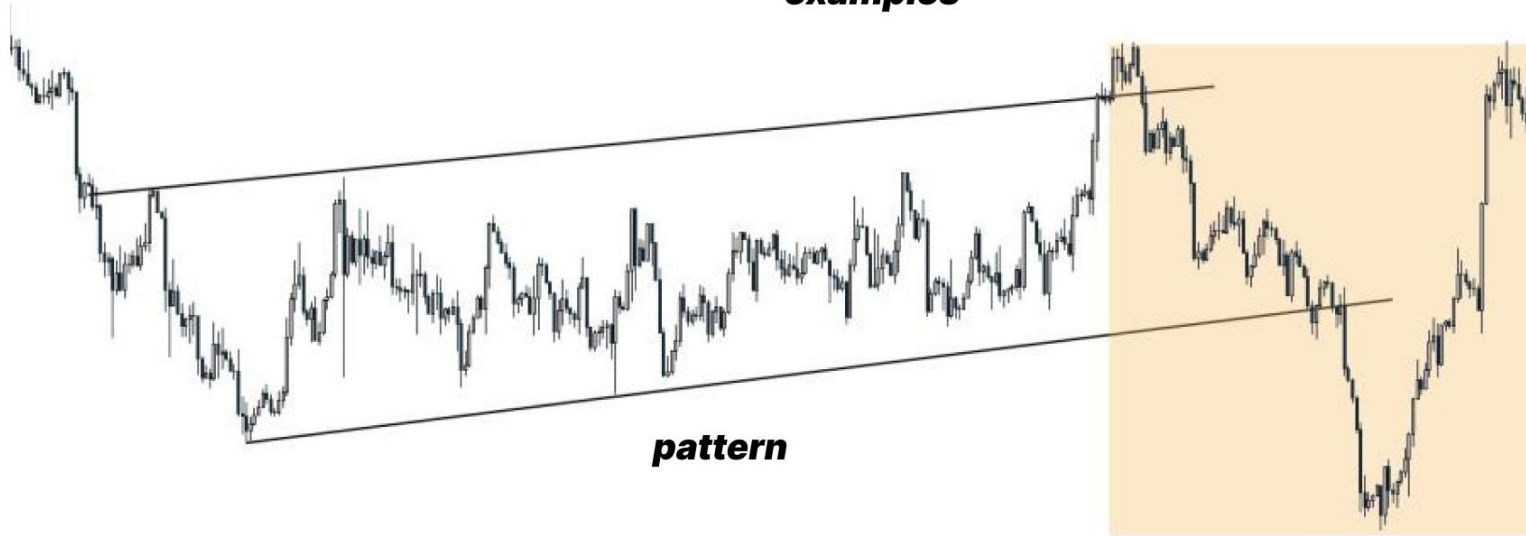


liquidity examples



trendline liquidity

examples



pattern



support&resistance

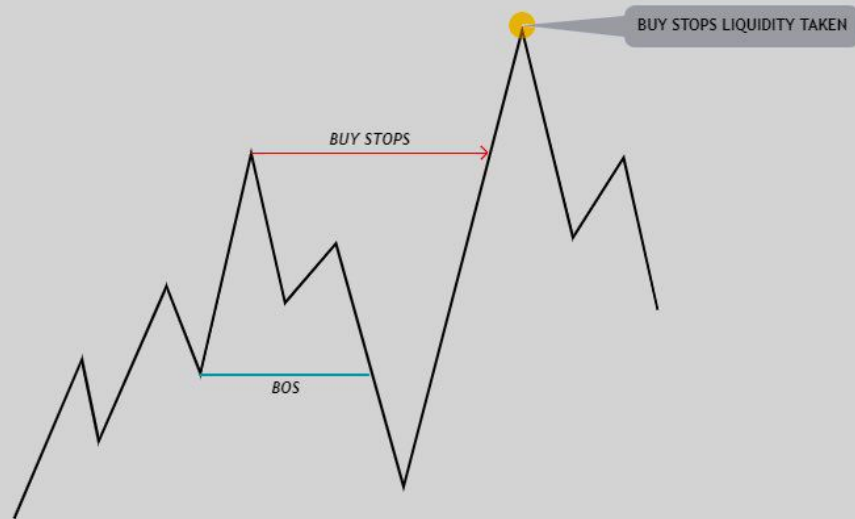
<https://twitter.com/mrRAJA1326>

LIQUIDITY

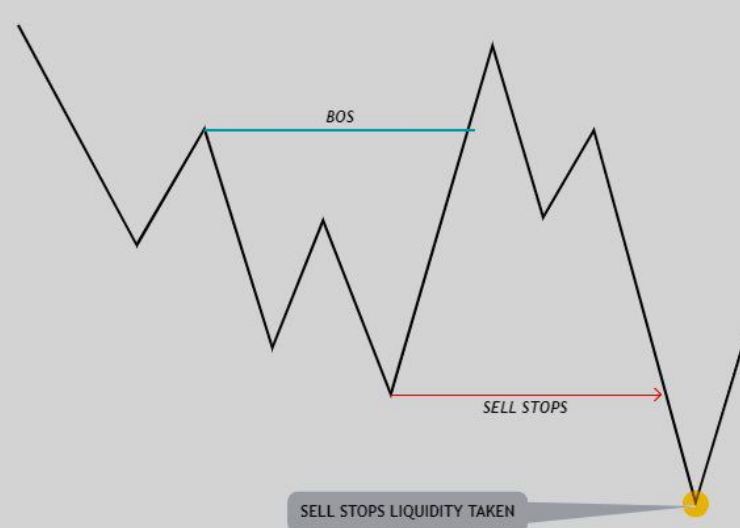
! RAJA !

PATIENCE | DISCIPLINE | FEARLESS | EXECUTION

BUY SIDE LIQUIDITY

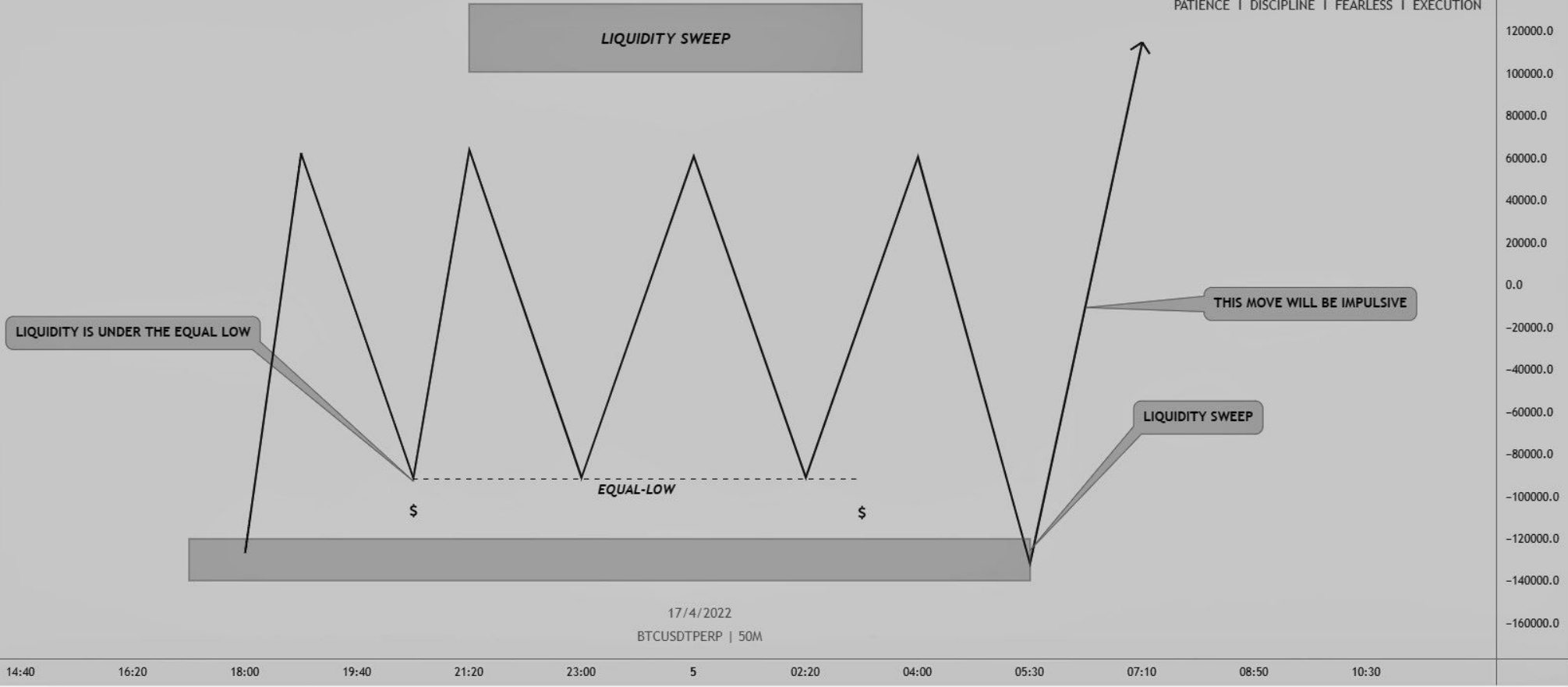


SELL SIDE LIQUIDITY



❗ RAJA ❗

PATIENCE | DISCIPLINE | FEARLESS | EXECUTION



LIQUIDITY / MANIPULATION / STOP HUNT / SWEEP

STOP LOSS=LIQUIDITY=MONEY

BUY STOPS LIQUIDITY;

- Above the range high
- Previous day high
- Intra week high
- old high
- short term high
- last 3 months high
- 6 month ago high
- 12 months ago high



SELL STOPS LIQUIDITY;

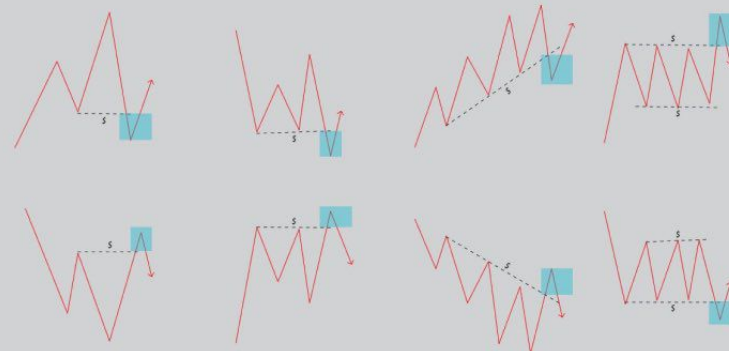
- Above the range low
- Previous day low
- Intra week low
- old low
- short term low
- last 3 months low
- 6 month ago low
- 12 months ago low

NAKED EYE LIQUIDITY SPOTTED AREAS;

- STRUCTIURAL LOW
- EQUAL LOWS
- BULLISH TRENDLINES
- RANGE
- STRUCTURAL HIGH
- EQUAL HIGHS
- BEARISH TRENDLINES
- ASIAN RANGES

BSL-BUY SIDE LIQUIDITY
SSL-SELL SIDE LIQUIDITY

LIQUIDITY MODELS



THE -END